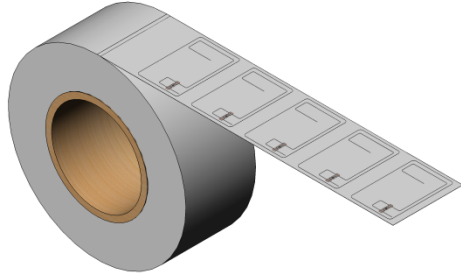
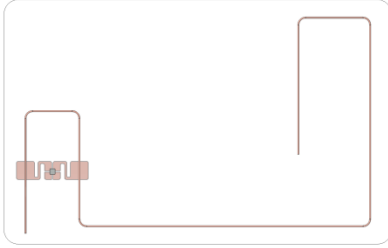


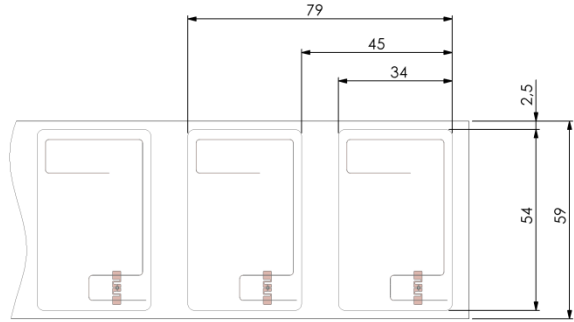
1493



Protocol : EPC Class 1 Gen 2 ISO 18600-6C

Operating frequency : Global 860-960 MHz

Configuration : Loop + monopole



Antenna dimensions

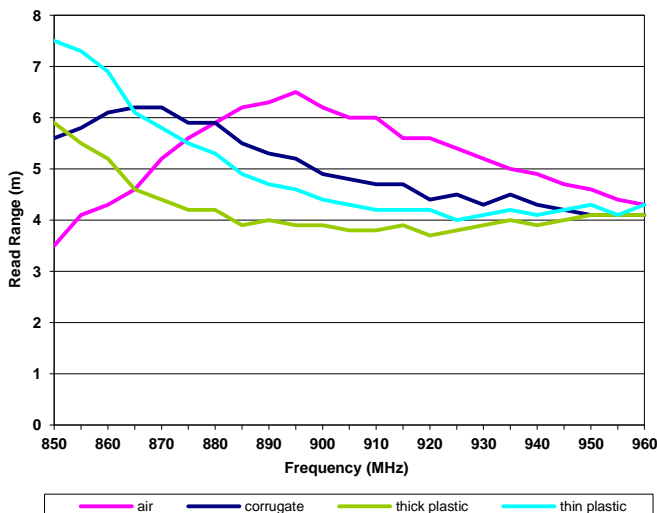
Antenna size	50 x29 mm	Material	Paper
Die-cut size	54 x 34 mm	Delivery	Reel 2000 pcs
Web width	59 mm	Quality	100% performance tested

Packaging

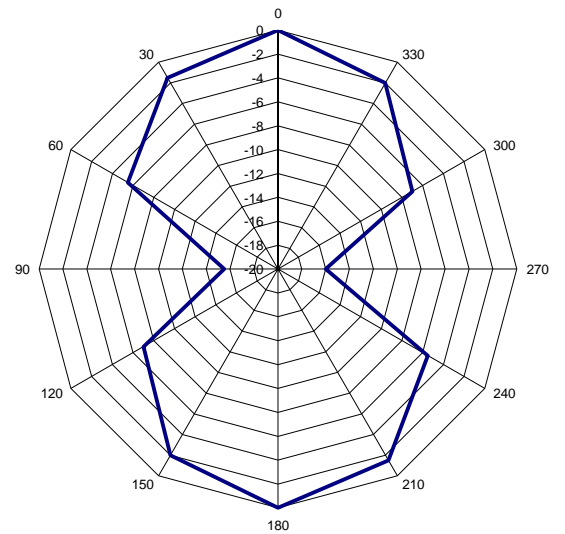
Chip Available

Part N.	EPC	UID	User memory	Data endurance	Data retention	
ET341493	NXP G2iL	128bit	64bit	20 years	10.000 cycles	
ET431493	NXP G2iM	128bit	64bit	512bit	20 years	10.000 cycles

Theoretical read range



Normalized radiation pattern



All the graphs are indicative: performance in real life applications may vary, calculations for transmitters with a 2W ERP output power level. Smart res RFID reserves the right to change its products and services at any time without notice. Our recommendations are based on our latest knowledge and experience. As our products are used in circumstances beyond our control, we cannot be held liable for any damage caused through their use.