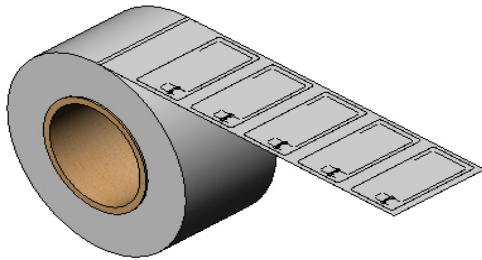
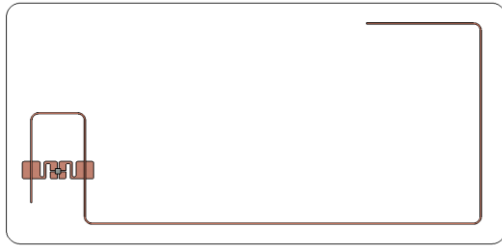


# 1341

# smartres

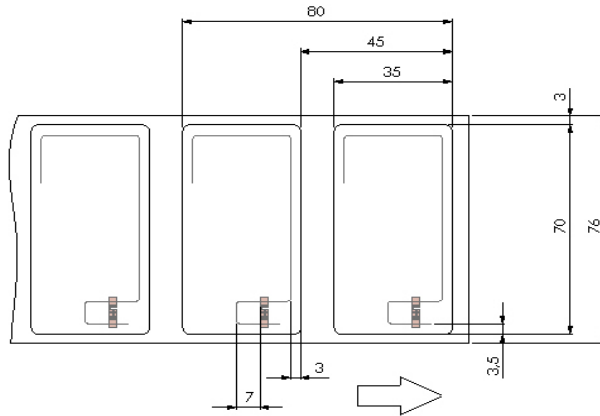
Innovative RFID production



**Protocol :** EPC Class 1 Gen 2 ISO 18600-6C

**Operating frequency :** Global 860-960 MHz

**Configuration :** Loop + monopole



### Antenna dimensions

|              |            |
|--------------|------------|
| Antenna size | 65 x 29 mm |
| Die-cut size | 70 x 35 mm |
| Web width    | 76 mm      |

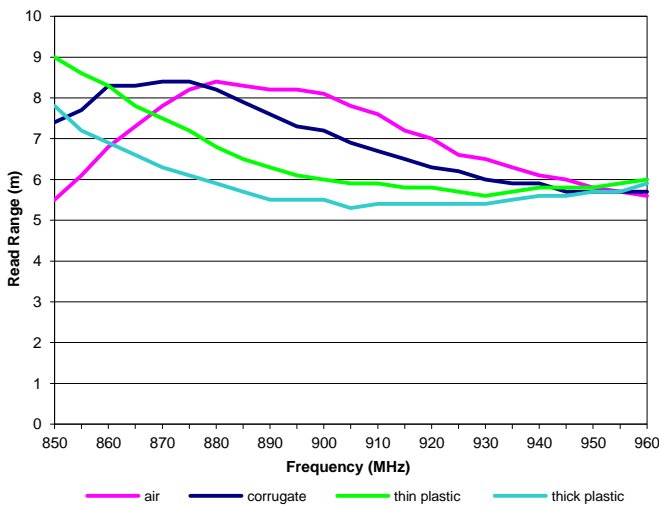
### Packaging

|          |                         |
|----------|-------------------------|
| Material | Paper                   |
| Delivery | Reel 2000 pcs           |
| Quality  | 100% performance tested |

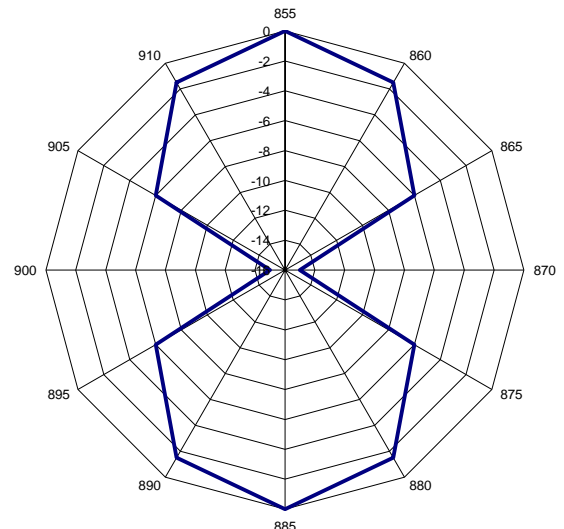
### Chip Available

| Part N.  | EPC      | UID    | User memory | Data endurance | Data retention |
|----------|----------|--------|-------------|----------------|----------------|
| ET341341 | NXP G2iL | 128bit | 64bit       | 20 years       | 10.000 cycles  |
| ET431341 | NXP G2iM | 128bit | 512bit      | 20 years       | 10.000 cycles  |

Theoretical read range



Normalized radiation pattern



All the graphs are indicative: performance in real life applications may vary, calculations for transmitters with a 2W ERP output power level. Smart res RFID reserves the right to change its products and services at any time without notice. Our recommendations are based on our latest knowledge and experience. As our products are used in circumstances beyond our control, we cannot be held liable for any damage caused through their use.

